



# 11420 STRAND DRIVE #314

*Rockville, Maryland 20852*

PRICED AT \$320,000 · C/C FEE: \$440/MONTH · MLS# MC6763212

ESTIMATED PROPERTY TAX AND NON-TAX CHARGES IN THE FIRST FULL FISCAL YEAR OF OWNERSHIP IS \$3,483.



PRESENTED BY



*Harold & Rose*  
HANNETT



301.622.0121 · 301.384.9494 · [WWW.THEHANNETTTEAM.COM](http://WWW.THEHANNETTTEAM.COM)

- › 2 BEDROOMS
- › 1 FULL BATH
- › UPDATED KITCHEN
- › LIVING ROOM
- › DINING ROOM
- › LAUNDRY ROOM
- › GARAGE & STORAGE
- › POOL & TENNIS
- › NEAR METRO

Welcome to this immaculate condo in Old Georgetown Village, conveniently located in North Bethesda near the White Flint Mall and Metro station! Please note the extra large marble foyer with mirrored doors and 2 closets! The kitchen is nicely updated with a silestone countertop; GE refrigerator, flat-top stove, and microwave; plus a KitchenAide dishwasher! The master bedroom also has mirrored doors on the double closet! The separate laundry room comes with a Kenmore Elite washer/dryer! Extras include a garage space, storage area, pool, and tennis! The furniture is also available for sale.



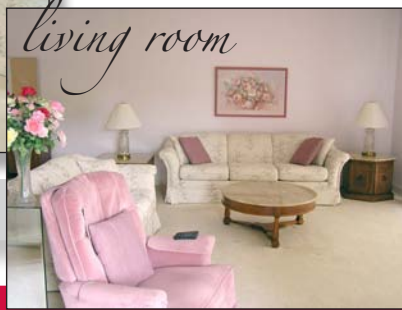
*foyer*



*kitchen*



*dining room*



*living room*



*master bedroom*



*bathroom*



*second bedroom*



*laundry room*

*view*



*balcony*



*pool*

